

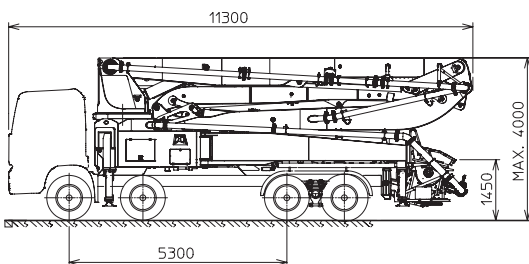
K45H XRZ

TRUCK-MOUNTED CONCRETE BOOM PUMP

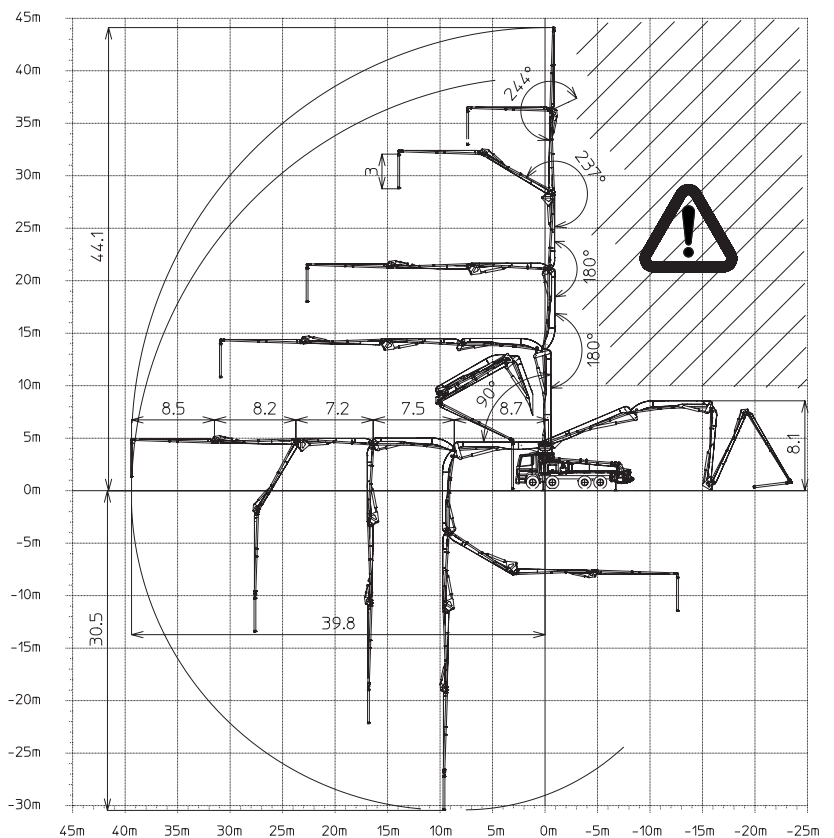
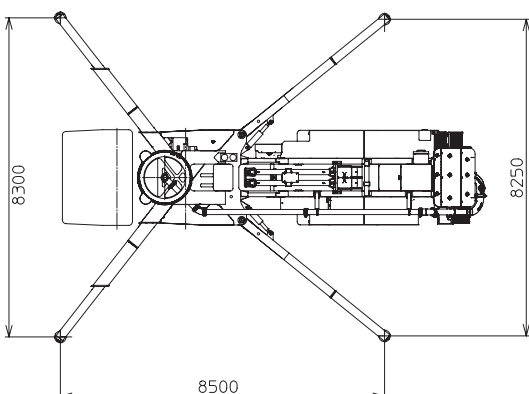
Placing boom	B5HRZ 45/41
Pumping unit	HPG 1408 IF9 PA
Driven by	PTO
Chassis	4 axles



Dimensions



Dimensions varying according to truck assembly



K45H XRZ

Main features

- Placing boom B5HRZ 45/41, 5 sections, pipeline diameter 125 mm, "RZ" folding system
- 4th and 5th boom sections made of light and resistant CIFA CARBOTECH composite material. 1st, 2nd and 3rd sections made of high strength steel
- Advantageous assembling on standard 4 axles chassis
- Self-supporting frame, torsion free, FEM designed
- Fully hydraulic outrigger controls on both sides of the truck
- Front "X" style diagonal outriggers with double telescopic opening and swing-out rear outriggers for a quick and easy set-up also in narrow areas
- "Load Sensing" proportional boom control
- Concrete flow rate regulator
- Safety device on opening inspection hatch
- HPG-IF pumping unit with closed circuit and reversal flow: superb performances, high pressures and output, high reliability and easy and reduced maintenance; 9 inches S valve

Standard equipment

- 2 Proportional radio control with two boom movement speed, synthesizer for automatic frequency search, 8 position joy stick and concrete flow rate regulator. 20 mt cable
- Emergency control pad for pumping unit HPG 1408
- Remote controlled electric vibrator placed on the concrete hopper grid
- Centralized lubrication system for pumping unit
- Automatic oil lubrication system for pumping pistons on HPG 1408IF
- Additional manual lubrication system for pumping unit
- Hard plastic outrigger support plates with relative housing
- Rear light on hopper
- Level readers for stabilization control
- Accessories for cleaning and pipes washing
- Double thickness concrete pipes, in high resistant steel - CIFA Long Life Pipes
- Aluminium hopper covering
- Electronic stability control and data logger **K-TRONIC®**

Optional

- High pressure water pump
- Air compressor for pipeline cleaning
- Centralized lubrication system for placing boom
- Air pipeline for placing boom
- Separated emergency engine kit for independent control of the hopper mixer, concrete pumping unit, boom and water pump
- Pumping unit Electronic version: HPG 1408 EPC

TRUCK-MOUNTED CONCRETE BOOM PUMP

Placing boom	B5HRZ 41/36
Pumping unit	HPG 1408 IF9
Driven by	PTO
Chassis	4 axles

Pumping unit technical data

Model		HPG 1408 IF9
Max. theoretical output	<i>m³/h</i>	140
Max. pressure on concrete	<i>bar</i>	80
Max. numbers of cycles per min.	<i>nr.</i>	28
Conc. cylinders (diam. x stroke)	<i>mm</i>	230x2000
Concrete hopper capacity	<i>l</i>	600
Hydraulic circuit		closed

Placing boom technical data

Model		B5HRZ 45/41
Pipeline diameter	<i>mm</i>	125
Max. vertical reach	<i>m</i>	44,1
Max. horizontal distance (from center of slewing axis)	<i>m</i>	39,8
Min. unfolding height	<i>m</i>	8,1
Section numbers		5
1st section opening angle		90°
2nd section opening angle		180°
3rd section opening angle		180°
4th section opening angle		237°
5th section opening angle		244°
Rotating angle		370°
End hose length	<i>m</i>	3

Technical data and characteristics subject to modifications without notice

